

# Foam Laminates

## of Vermont

### Installation Guide for Structural Insulated Panel Homes



# Foam Laminates



## of Vermont

### Table of Contents

#### Introduction

Panel off Loading.....	Page 4
Panel Storage.....	Page 5
Sip Tools.....	Pages 6 & 7

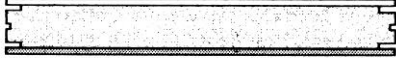
#### Building a Structural House

First Floor Deck Details.....	Page 8
Slab Detail.....	Page 9
First Floor Wall SIPS.....	Page 10 & 11
Openings.....	Page 10
Second Floor Walls.....	Page 12
Truss Roof.....	Page 13
Structural Panel Roof .....	Pages 14-16

#### Finishing the Job

Roof Foaming.....	Page 17
Is a Cold Roof Necessary?.....	Page 18
Roof Paper.....	Page 18
Sub Fascia.....	Page 19
Window Cut Outs.....	Page 20
Wall Foaming.....	Page 20
Wall Paper.....	Page 20 & 21
Siding Options.....	Page 21
Wiring Tips.....	Page 24

# Foam Laminates



## of Vermont

### Introduction

Foam Laminates of Vermont has been manufacturing SIPs for over 30 years. The building industry has changed dramatically over the years. We are building more complicated structures, on an accelerated schedule, in all seasons and weather, with a greater variety of materials and a greater number of contractors. Adding into the mix an intense focus on energy efficiency and even the best of new building systems will require a thoughtful application and installation.

This manual gives you the information you need to match the quality of the installation to the quality of the system. Our SIP systems are energy efficient, engineered for strength, with designer flexibility, and lasting excellence.

We believe the way to build a high-performance building that are safe, comfortable, durable and efficient- is to manage the flow of air and moisture in, around and through the building. Structurally insulated panels installed correctly with a properly sized and installed HRV system will achieve this.

Following the steps in this manual will help to assure a high-performance home to enjoy for years to come.

# Foam Laminates of Vermont

## Panel Delivery

Our SIPs are almost always delivered by tractor trailer truck. The panels are stacked on a flatbed trailer with tarps over them. Typically, the panels are unloaded with an all-terrain fork lift. This fork lift is the responsibility of the home owner. The truck driver allows for 2 hours unloading. Anything after 2 hours is billed at \$90 per hour.

This truck is 70 feet long, so site access is important. If you know this truck will not fit in your site, you will need to make special arrangements ahead of time. Sometimes we can deliver with a smaller truck. Most times home owners find a different spot to unload and the SIPs are shuttled to the job site.

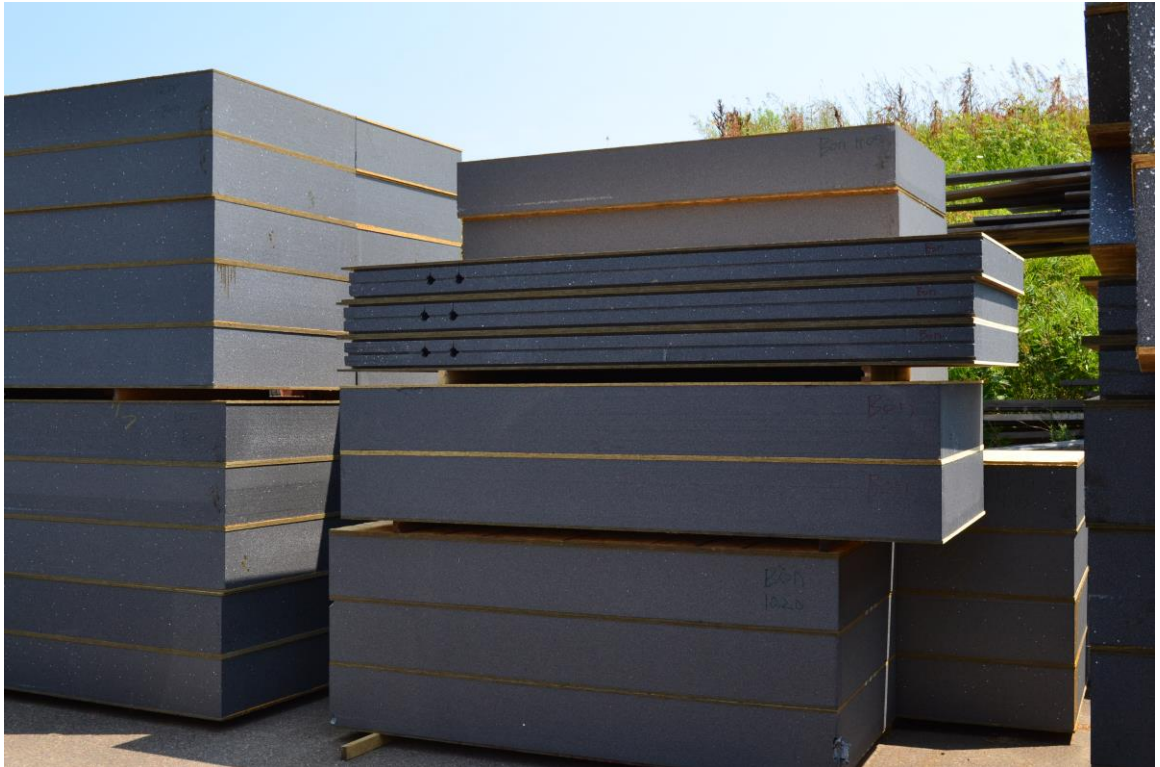


# Foam Laminates

## of Vermont

### Panel Storage

It is important that your SIPs stay dry when they are stored on site. We recommend that SIPs be stacked at least 3" off the ground. They should be covered with tarps or plastic if it is going to rain. OSB can swell when it gets wet. This can make installation more difficult at times. Make sure your splines, spray foam, fasteners, and tools are in a dry place as well.





# Foam Laminates

## of Vermont

### SIP Tools

All Structural Insulated Panel quotes from Foam Laminates of Vermont include tools to help ease SIP installation. These are the tools we provide:

### Panel Saw

Our panel saw is an attachment made by Prazi USA. It is essentially a chain saw bar and a gear box that mounts to a circular saw. This kit fits 7-1/4" circular saws manufactured by Skil, Bosch, Dewalt, Craftsman, Black & Decker, Rigid, Milwaukee, Porter Cable, Hitachi, and Makita. (Excluding Front Plate Adjustable Saws)

We can also get a kit for worm drive saws. Please tell us when making your order if you want the worm drive kit.

This kit is used to cut your SIPs. This will be used to cut panels to length and width. It will also be used to cut window and door openings.

If you elected to purchase a full pre-cut from Foam Laminates of Vermont this tool won't be necessary.



# Foam Laminates

## of Vermont

### Hot Knife

The hot knife is a hot iron used to recess foam for 2x lumber. This tool has an adjustable bar for depth. Caution should be used with this tool. It gets very hot.



### Foam Gun

The foam gun is to be used in conjunction with the cans of spray foam that we send with your SIPs. It is very important to foam all your panel joints after all the SIPs are installed. Always leave a can of foam on the foam gun! If you remove the can and leave the gun the foam inside will harden which will ruin the gun.



# Foam Laminates of Vermont

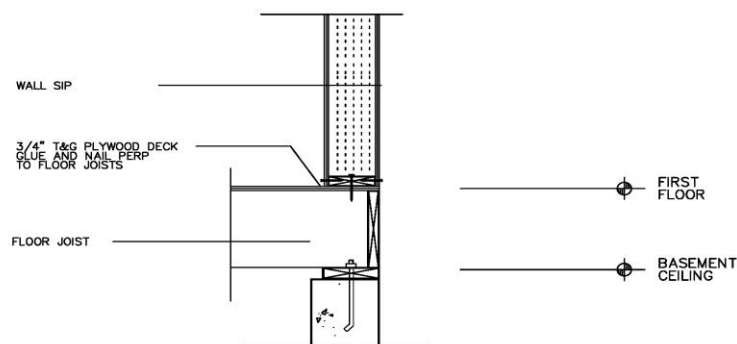
## Building a Structural Insulated Panel Home

A structural house utilizes the SIPs for both the walls and the roof. Typically, there are a few structural members present to help support the roof panels. There is no timber frame in a structural house.

### First Floor Deck

Typically, the first-floor wall SIP sits directly on top of the first-floor deck. The outside face of the SIP is flush with the outside of the deck. The deck will be insulated by a separate contractor. Spray foam is the most popular choice for this area.

The first step for installation is to check the deck to make sure it is square. This is important because the rest of your house will depend on a square deck. Square up the deck if necessary. Once the deck is square you will need to chalk lines for the sill plates. You can chalk lines 7/16" from the edge of the deck. This will represent the edge of the 2x6 sill plate. The next step is to lay down sill sealer. This material will ensure a tight air seal between the plate and the deck.



STRUCTURAL SIP WALL DETAIL  
SCALE: 1"=1'-0"

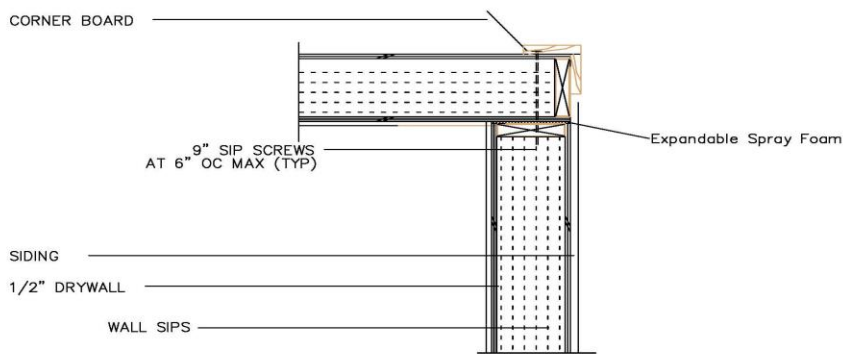


# Foam Laminates

## of Vermont

A SIP corner is made by running one panel by the other. (See Detail 1) This is important to remember when laying plates. You need to have a 1/2" gap between plates at all corners. This allows the inside skin of OSB to slide between the plates.

2x6 plates are typically fastened with galvanized ring shank nails or screws. Nails are typically faster with modern pneumatic nail guns. Once all your plates are down you can move on to installing your first-floor wall SIPs.



DETAIL #01

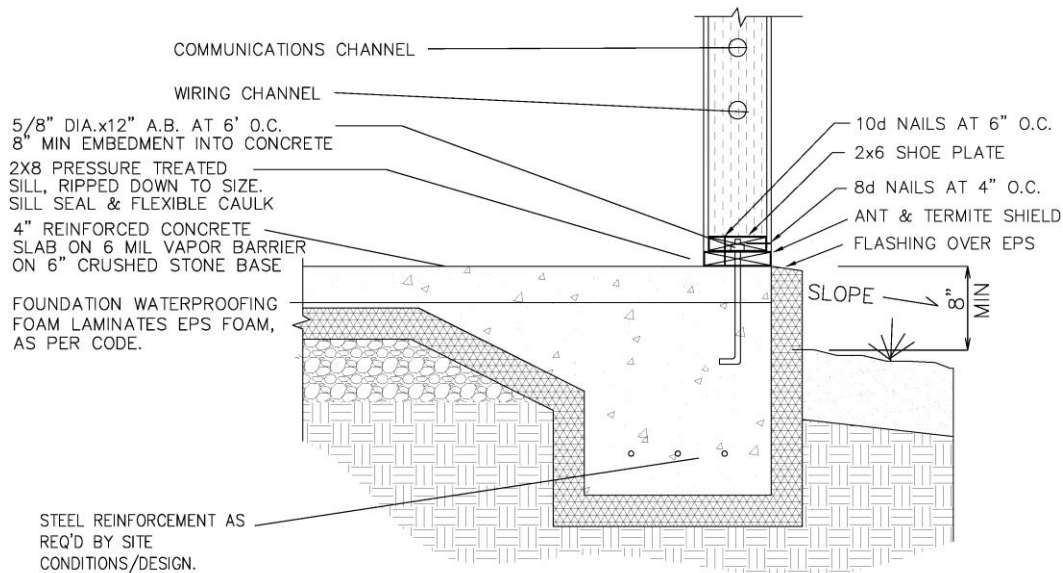
## Slab Detail

There are several different ways to apply SIPs to a slab. We typically like to see a concrete curb around the perimeter to the slab. The SIPs would sit on top of this curb. The detail keeps the bottom of the panel elevated and away from moisture. Panels can be applied directly to a slab if you do not have a curb. The process is the same for both details.

First you will need to lay down a sill plate. This is always pressure treated material. It needs to be the same width as your wall panels. Typically, a 2x8 is ripped to 6-1/2" for a standard wall panel. This sill plate will be bolted to your slab or curb. Make sure sill seal is used between the plates and the concrete.

Add another layer of sill seal to the 2x PT plate. Apply a 2x6 plate in the center of the PT sill plate. This will act as your shoe plate for your wall SIPs. See the detail below for illustration.

# Foam Laminates of Vermont



\*\*THE PURPOSE OF THIS DETAIL IS TO ILLUSTRATE THE CONNECTION BETWEEN THE FRAME, PANELS AND FOUNDATION. THE DESIGN FOR THE FLOATING SLAB SYSTEM BY OTHERS.\*\*

FLOATING SLAB DETAIL  
SCALE: NTS

## First Floor Wall SIPs

The first step is to apply triple expanding spray foam on top of the 2x6 plate. This will need to be done right before applying each SIP. Concussion collapses this spray foam so caution must be taken when applying SIPs. Typically, all your first floor SIPs will be recessed on the bottom to accept a plate.

### Openings

Window and door openings should be laid out on the plates if they require a header. Panel joints usually land on the edge of these openings so 2x lumber can be added to support headers. Headers should be pre-built and ready for installation. Each panel joint will have 2 studs on each side of the header. One will extend from the bottom plate to the top plate. The other will extend from the bottom plate to the bottom of the header. You will need to frame these openings as the panels are installed. A panel will be provided to slide over the header. This panel will be run horizontally.

Small openings without headers will be cut out of the SIPs after they are installed. This will be done with the Prazi saw and your hot knife. These openings can be laid out on the inside of the panel.

# Foam Laminates

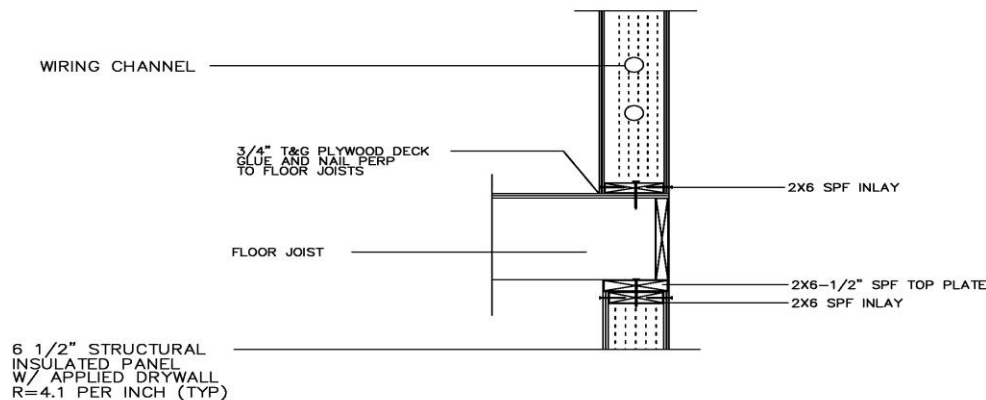
## of Vermont

### Starting Panel Installation

We recommend starting panel installation at a corner. Creating the corner will help the panels stand on their own. You will need to install a 2x6 in the side of the inside corner panel (See Detail 1). This is necessary to fasten the corner together. Holes should be drilled in the 2x6 at all electrical chases. Make sure the corner is square and plumb before fastening the whole corner.

The next step is to install more wall panels. Typically, panels are stood up next to one another. 3" OSB splines are dropped into the spline channels from the top. Splines are fastened with 8d Galv. Ring shank nails. Do not fasten all splines until the wall panels are plumb. Wall sections should be braced.

All walls should be plumb, square, and straight before top plates are installed. Top plates consist of a 2x6 SPF plate inlaid into the top of the SIP with a 2x8 ripped to 6-1/2" acting as the double top plate. Plates should lap at corners to add rigidity to the wall sections. See the detail below.



TOP PLATE DETAIL

Once the walls have plates, the second-floor deck can be framed. Typically, the second floor is framed directly over the SIP, much like it would be with standard platform framing. This can be seen in the detail above. All first-floor interior partitions should be framed at this time as well.

# Foam Laminates

## of Vermont

### Second Floor Walls

Framing second story walls with SIPs is the same process as the first floor. All the same steps can be applied. Gable panels will need to be cut to size. The top should be recessed 1-5/8" with your hot knife to accept a 2x6 plate. Walls should be braced, plumb, square, and straight before proceeding to the roof.



# Foam Laminates

## of Vermont

### Roof Options

Structural insulated panel homes have two typical roof systems. The first is conventional trusses over the SIP walls. The second is using SIPs to create your roof with support beams or TJI splines.

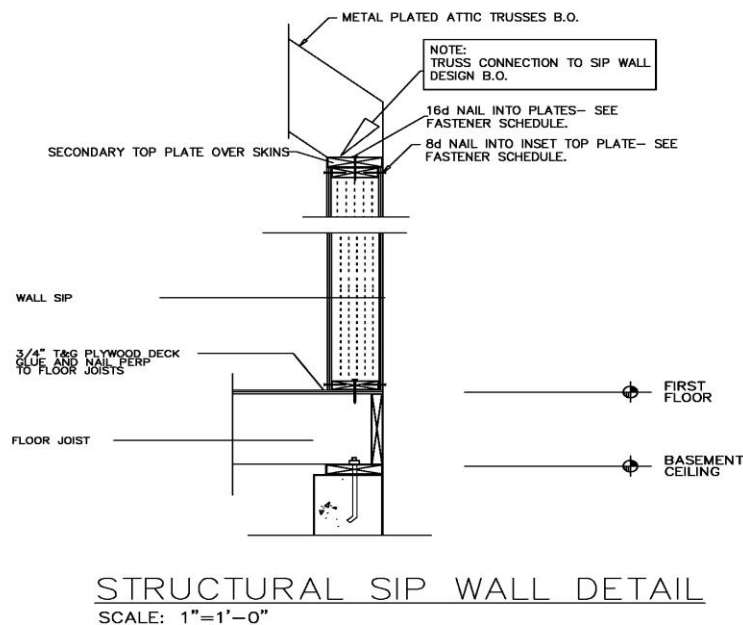
### Trusses

Conventional trusses are probably the most popular method for creating a roof over SIP walls. These trusses can be insulated with blown in cellulose to create an R value of up to 100. This method coupled with the high-performance nature of the SIPs will create a very tight home.

Flat ceiling trusses will get framed over the wall SIPs including the gables. This will ensure that the insulation covers the top of the walls to create a tight seal. In this case all your wall SIPs would be framed to the same height. The double top plate will need to be in place before the trusses are set.

Sloped ceiling trusses (Scissor Trusses) will mean the wall SIPs will need to be framed different. With sloped trusses the gable SIPs will extend all the way to the top of the roof line. This means the panels insulate the gable ends.

Trusses will need to be set with a competent crew and a crane. Bracing should be readily available to keep the trusses upright. Trusses should be attached to SIPs with Simpson Truss clips. See the detail below.



# Foam Laminates of Vermont

## Structural Insulated Panel Roof

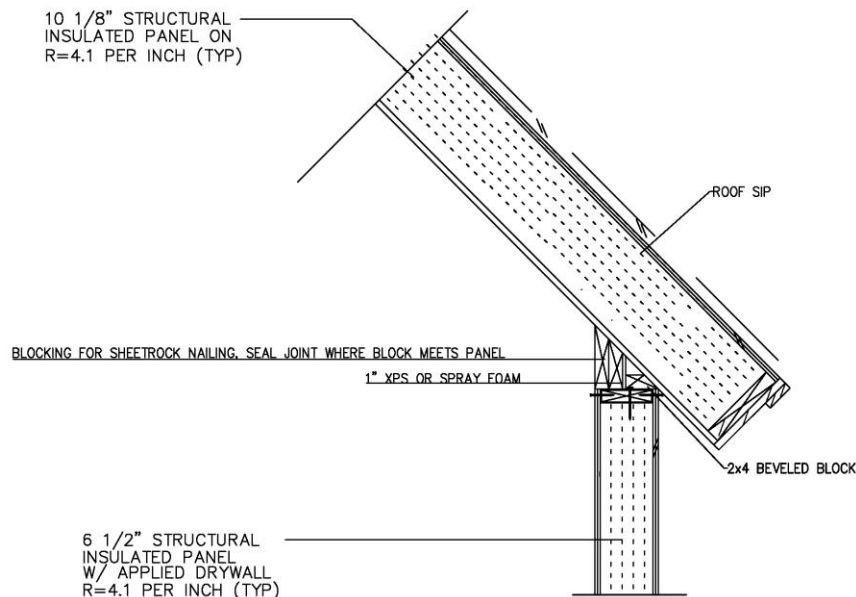
Our structural insulated roof panels can span 10'-12' before they need structural support. Structural support is usually added with 3 different methods.

### TJI Splines w/ Ridge Beam

You will need a structural ridge beam to support the roof SIPs. This can either be a free span ridge or a ridge with a post. You will need to cut beam pockets in the gable end SIPs to accept this ridge beam. Beam pockets need to have 2x6 lumber inlaid around the pocket. If you bought pre-cut SIPs this beam pocket will already be in place.

The ridge beam should be lifted into place with a crane. The top of it should be pre-beveled the same angle as the roof slope.

The eave wall panels will need a beveled block on top of the secondary top plate. This block should be cut to the same slope as the roof. This block is added so that the SIP can be fastened to the top of the wall using SIP screws.



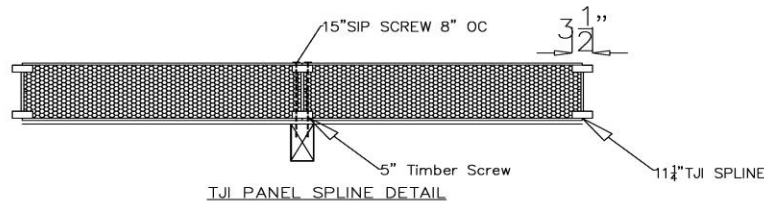
Beveled Block Detail

# Foam Laminates

## of Vermont

TJI splines can be placed between each SIP to add strength to the assembly. The roof SIPs will come pre-routed to accept this TJI if they are ordered that way. Installing TJI's is as simple as adding them between each panel during installation. These splines should be nailed top and bottom through the OSB skin of the SIP. We also recommend applying a bead of spray foam to each TJI before it is installed.

Use the SIP screws provided with your kit to fasten all roof SIPs to both the walls and the ridge beam.



### Structural Ridge Beam w/ Purlins

This system requires a structural ridge beam and structural purlin to support the roof SIPs. These can either be free span or a beam with a post. You will need to cut beam pockets in the gable end SIPs to accept these beams. Beam pockets need to have 2x6 lumber inlaid around the pocket. If you bought pre-cut SIPs this beam pocket will already be in place.

Once the beam pockets are cut and framed you can lift the beams into place with a crane. The top of the beams should be pre-beveled the same angle as the roof slope. Once the beams are in place you can start applying roof SIPs.

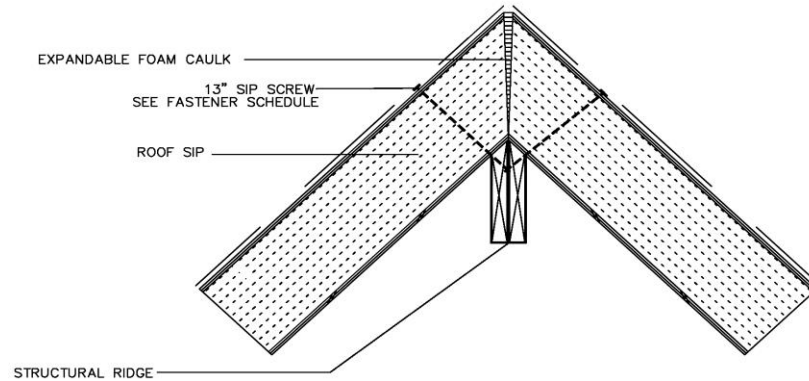
SIPs will be applied in a vertical orientation with a single 3" spline on the top and the bottom. The 3" splines will need to be applied as the panels are put together. Splines should be fastened with 8d galv. Ring shank nails. Panels need to be fastened to the walls, purlins, and ridge beam with the SIP screws applied in your kit.



# Foam Laminates



of Vermont



RIDGE DETAIL

## **Load Bearing Interior Partitions**

Roof SIPs can be supported by interior partitions. These partitions will need to be framed after the wall panels are installed and before the roof SIPs go on. Partitions should either be beveled on top or square with an added beveled block.

The eave wall panels will need a beveled block on top of the secondary top plate. This block should be cut to the same slope as the roof. This block is added so that the SIP can be fastened to the top of the wall using SIP screws.

SIPs will be applied in a vertical orientation with a single 3" spline on the top and the bottom. The 3" splines will need to be applied as the panels are put together. Splines should be fastened with 8d galv. Ring shank nails. Panels need to be fastened to all interior and exterior walls with the SIP screws applied in your kit.

# Foam Laminates

## of Vermont

### After Installation

Once wall and roof SIPs are installed you can move on to finishing SIP related items. These items include, cutting windows, nailing off splines, foaming, installing 2x lumber, and wrapping your SIPs with water proof membrane.

### Roof Foaming

All the SIP joints in your roof should be foamed immediately after installation. All roof splines should be nailed off before foaming starts.

We like to use a drill and fill method. A drill with a 3/8" bit will be needed for this. Wrap tape around the bit to set your depth to the foam channel in the center of the panel. Start at the ridge drilling holes every 8"-10" in all the panel seams. Once all the holes are drilled you can start foaming. Start at the ridge and work your way down. Spend 3-4 seconds per hole. You should start to see foam creeping into the next hole.

FLV recommends foaming in temperatures above 40-degree Fahrenheit. Spray foam expands much better in these temperature ranges which will provide a better seal. If foaming must be done in colder temperatures, you will need to water mist the foam which will help expansion.



# Foam Laminates

## of Vermont

### Vented or “Cold” Roof

A vented roof system is achieved by running strapping over the top of the roof SIPs and adding an extra layer of sheathing. Vents will be added at the ridge and eave. This assembly provides air movement over the top of the panels, which promotes drying if moisture develops at the surface of the roof.

Many shingle manufacturers will not warranty their products over an unvented roof. Always check with your shingle manufacturer if you plan on applying asphalt shingles without a vented roof system.

Metal roofing is commonly used over roof SIPs. This can be applied directly to the SIP with 30# felt or over a vented roof assembly. We do not recommend an air space between the metal roof and the sheathing. This can cause condensation under the metal which may cause rusting.

### Roof Paper

We recommend 30# felt because it works great for protecting your SIPs. Builders have been using this for years. Often roofing is removed 10-15 years down the road for additions and the OSB still looks brand new. The same cannot be said for synthetic products. Many times, builders find rotten plywood with these products. Asphalt felt has a permeance rating of only 5 perms when dry, but a much higher rating of 60 perms when wet. The felt can soak up water that gets behind it and gradually dry to the exterior. Plastic house wraps are non-absorbent. Any water trapped behind them can only pass through to the exterior as vapor. We do not recommend synthetic products over our SIPs.



This paper should be applied to the roof as soon as the spray foam is cured. This will keep your SIPs dry in inclement weather.

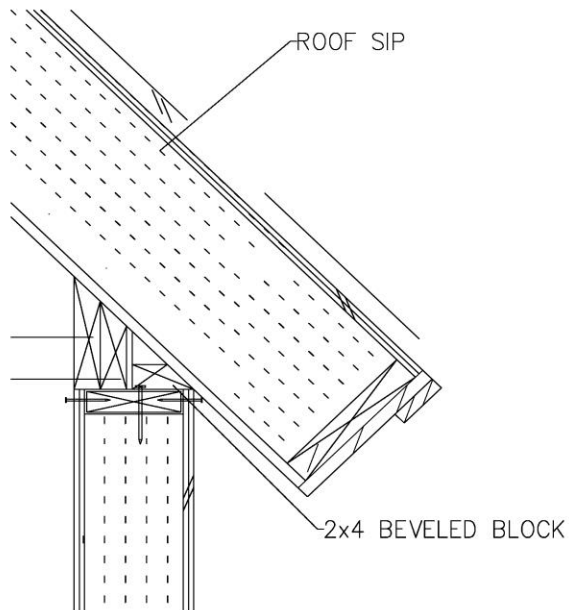
# Foam Laminates



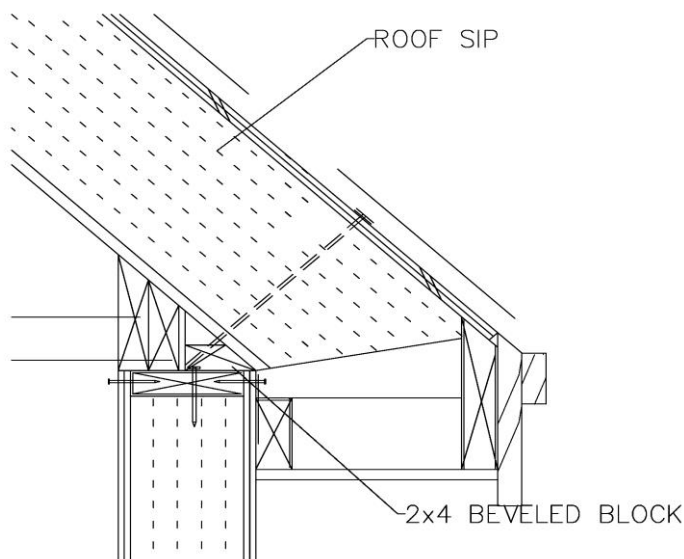
## of Vermont

### Sub Fascia

Sub Fascia should be installed along the roof before roofing is applied. If you went with a square detail this will be as simple as routing out the edges of the panels with the hot knife and adding 2x lumber to the edges. The 2x lumber should be fastened to the OSB skins using 8d galv ring shank nails.



If you went with a flat soffit detail you will need to build ladders on the ground and put them into place.



# Foam Laminates



## of Vermont

### Window Cut outs

Any window cut outs that were not framed during wall panel installation should be cut at this time. This will be done with the Prazi saw and your hot knife. These openings can be laid out on the inside for the panel. Lines should be chalked to represent the edges of the opening.

After the opening is cut you will use the hot knife in your kit to rout the edges to accept a 2x6. Once all foam is routed you can install the window lumber. Apply a bead of foam to all 2x6 lumber before installation. Tap the lumber into place lightly so you don't collapse the foam. Lumber should be fastened through the OSB skin with 8d galv. Ring shank nails.

### Wall Foaming

Do not foam your walls until all wiring is done, window cut outs are finished, and splines are nailed off. Wall foaming should be done before windows and doors are installed. This will ensure that you do not get spray foam on your windows and doors.

Wall foaming is done much like the roof. You need to drill holes in all panel seams 8"-10' apart. Make sure you chalk lines where all electrical chases are located so you do not drill into the wiring. Once all holes are drilled you can start foaming. We recommend starting at the top of each seam and working towards the bottom. 3-4 seconds for each hole should suffice.

FLV recommends foaming in temperatures above 40-degree Fahrenheit. Spray foam expands much better in these temperature ranges which will provide a better seal. If foaming must be done in colder temperatures, you will need to water mist the foam which will help expansion.

### Wall Covering

We recommend 30# felt because it works great for protecting your SIPs. Builders have been using this for years. Often siding is removed 10-15 years down the road for additions and the OSB still looks brand new. The same cannot be said for products like Tyvek and Tytar. Many times, builders find rotten plywood with these products. Asphalt felt has a permeance rating of only 5 perms when dry, but a much higher rating of 60 perms when wet. The felt can soak up water that gets behind it and gradually dry to the exterior. Plastic house wraps are non-absorbent. Any water trapped behind them can only pass through to the exterior as vapor.

# Foam Laminates

## of Vermont

### **Home Slicker®:**

Home Slicker® is a product that creates an air space between your siding and your felt paper/SIP. This product will ensure that the SIP and your siding will dry out if water gets behind the siding. This product is not needed for Vinyl siding. The air space created by this product will reduce the forces that draw water into your siding assembly. Water that does migrate into this area will drain away from the wall and allow the cavity to dry quickly.



### **Siding Options**

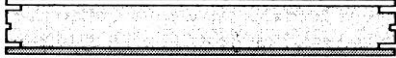
**Shiplap:** We recommend adding furring strips to your SIPs for shiplap siding. This will increase the fasteners holding power. We recommend ring shank nails for application. Adding furring strips negates the need for Home Slicker because this will create an air space behind the siding.

**Vinyl Siding:** Home Slicker is not needed for this product. Vinyl is applied with roofing nails. See manufacturers' recommendation for fastening intervals.

**Hardie Plank®:** Hardie Plank is a very popular siding choice by many of our customers. We recommend installing this product over Home Slicker®. Please see the James Hardie Website for fastening details.

**Clapboards/Shakes:** We recommend installing these products over Home Slicker®. Typical installation is done with galvanized ring shank nails.

# Foam Laminates



## of Vermont

In summary, your SIP installation should be done in the following order:

1. Square up the deck
2. Lay 2x plates
3. Stand up wall SIPs
4. Add top plates/bevel blocks to top of wall SIPs
5. Install structural members for roof
6. Install roof SIPs
7. Foam Roof
8. Add 30# felt to roof
9. Install Sub-Fasica
10. Run Electrical
11. Cut left over openings
12. Nail off wall splines
13. Foam Walls
14. Paper walls

If you have taken the steps in this manual during your SIP installation you will have a high-performance wall and roof system that will be reliable for years to come. If you have any questions about your SIP installation, please do not hesitate to contact Foam Laminates of Vermont.



# Foam Laminates



## of Vermont

### ELECTRICAL HINTS:

- Use a remodeler's box that clamps the wire securely to the box and has flanges so that the box can be fastened to the panel skin.
- Do NOT cut long grooves in the panel skins. (If necessary, use a 24" drill to go from one 4" access hole to another access hole)
- Use interior stud walls whenever possible. Rather than trying to bend around a 90 degree turn into the SIP, drill a long diagonal hole from the stud through the wall panel and into the horizontal chases. Wires will slide much easier through this configuration.
- Push all wires through a chase at the same time. With Electrician's pliers, fold and crimp the longest wire back on itself about 1". Use electrical tape and cover that end. Stagger the ends of any additional wires and tape over these. Keep all wires flat when taping together.
- You can gain access to wire chase intersections by using a 4" hole saw. Use a flat blade screw driver to pry out the plug. Keep the plug to re-install later. After all wires are pulled, spray foam the hole and replace the plug.
- Try to locate all switch boxes next to a door opening. You can create a groove in the side of the opening by running your hot knife up the side of the opening. You can then drill a hole to get to the switch box.
- There are several videos available on YouTube that go into more detail about wiring. You can gain access to these videos by searching "SIP Wiring".